

# Stage Map



## Stage 8 | Saturday | 30 September 2023

Setia Alam - Kuala Lumpur | Race Distance: 156.5 km

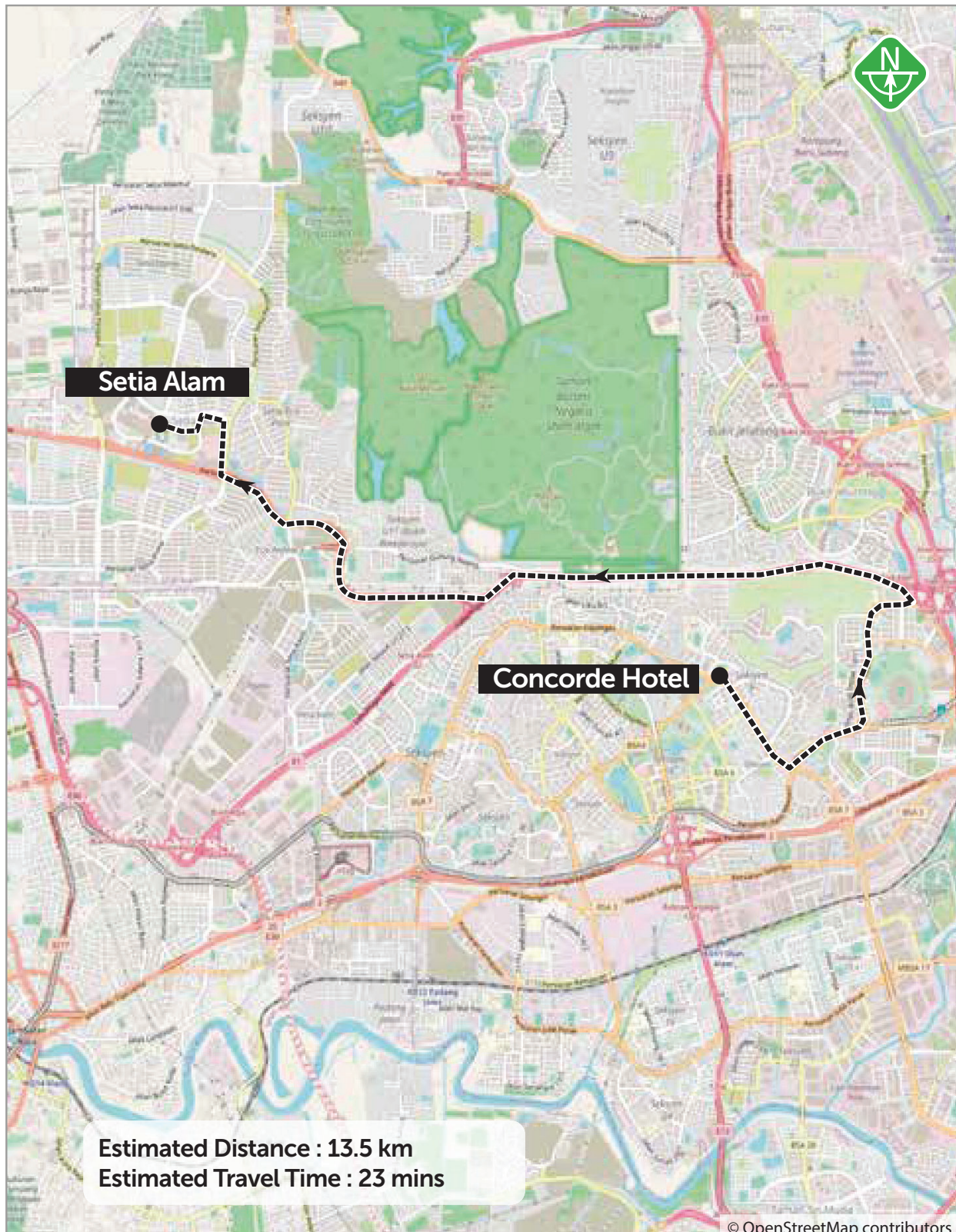




# Transfer to Start Map

**Stage 8 | Saturday | 30 September 2023**  
Setia Alam - Kuala Lumpur | Race Distance: 156.5 km

**Concorde Hotel - Setia Alam**

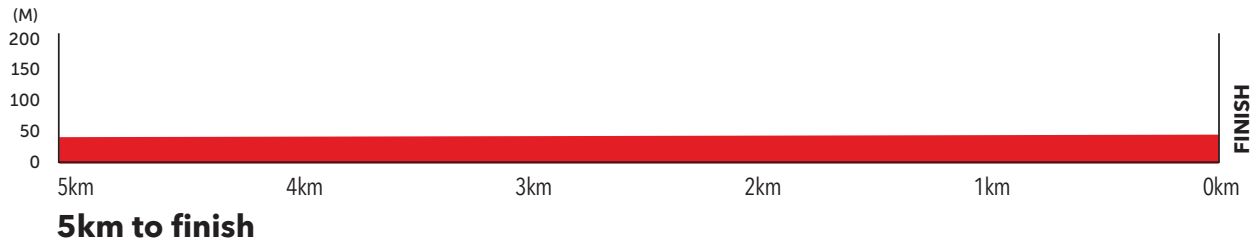
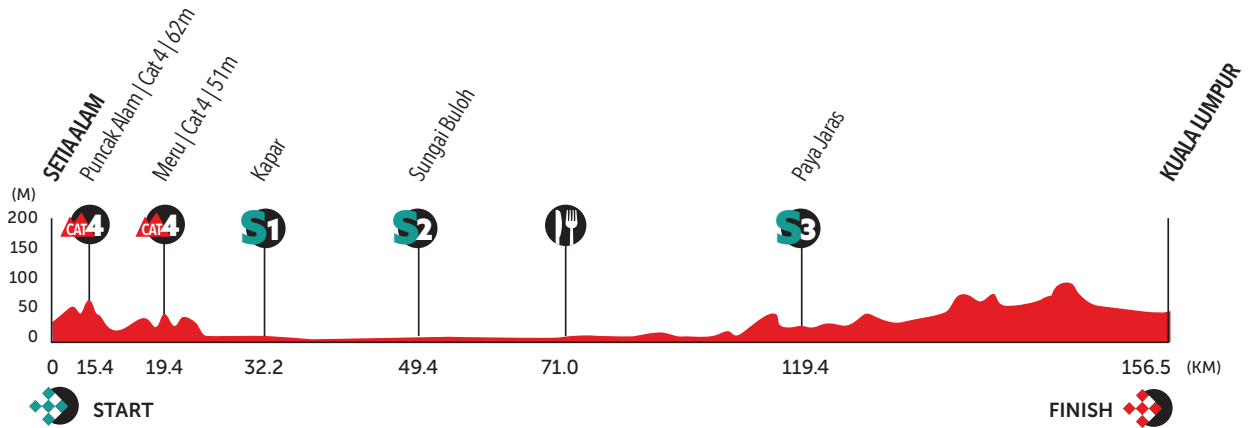


# Profile



## Stage 8 | Saturday | 30 September 2023

Setia Alam - Kuala Lumpur | Race Distance: 156.5 km





# Schedule

## Stage 8 | Saturday | 30 September 2023 Setia Alam - Kuala Lumpur | Race Distance: 156.5 km

Start Location : Setia City Convention Centre, Setia Alam  
 Finish Location : KLCC, Kuala Lumpur  
 Neutral Zone : 7.1km

Cavalcade @ 45mins  
 46kph  
 44kph  
 42kph

KM	KM TO GO	FEATURES	INSTRUCTION	DESCRIPTION	ESTIMATED TIME OF ARRIVAL (km/hrs)			
					11:15	12:00	12:00	12:00
From Start Gantry at Setia City Convention Centre: Turn left to Persiaran Setia Wawasan, then turn right to Persiaran Setia Utama, then turn right to Persiaran Setia Perdana, then turn left to Jalan Setia Gemilang U13/47 (Caution: 6 Humps in 800m), then turn right to Persiaran Setia Makmur, then bear left at the fork junction to Persiaran Lumut, then turn left to Persiaran Mokhtar Dahari. End of the Neutralised Zone is on Persiaran Mokhtar Dahari (JKR Voltage Box on the left).					11:15	12:00	12:00	12:00
<b>0.0</b>	<b>156.5</b>	<b>RACE START PROPER</b>		<b>"Persiaran Mokhtar Dahari (JKR Voltage Box on the left)"</b>	<b>11:29</b>	<b>12:14</b>	<b>12:14</b>	<b>12:14</b>
3.5	153.0	Splitter / Traffic Light Junction	Both Sides	Budiman Valley on the left	11:34	12:19	12:19	12:19
6.6	149.9	Fork Junction	Keep Right	To Persiaran Mokhtar Dahari	11:38	12:23	12:23	12:23
7.5	149.0	Fork Junction	Keep Right		11:39	12:24	12:24	12:25
8.7	147.8	Traffic Light Junction	Straight On	Sign <b>"GRANDEUR LABS"</b> on the right	11:40	12:25	12:26	12:26
9.1	147.4	Traffic Light Junction	Turn Left	To Jalan Bukit Cerakah	11:41	12:26	12:26	12:27
14.4	142.1	KOM START 13m	Straight On	Yellow Sign: JKR Mula	11:48	12:33	12:34	12:35
14.5	142.0	Traffic Light Junction	Turn Left	To Jalan Bukit Cerakah / Jalan Seri Jaya on the right	11:48	12:33	12:34	12:35
<b>15.4</b>	<b>141.1</b>	<b>KOM 1 - PUNCAK ALAM, Cat 4, 62m</b>	<b>Straight On</b>	<b>Red Sign: Awas!</b>	<b>11:49</b>	<b>12:34</b>	<b>12:35</b>	<b>12:36</b>
16.9	139.6	KOM START 16m	Straight On	Green Sign: SAM Nurul Iman	11:51	12:36	12:37	12:38
17.9	138.6	Hump	Straight On	<b>[CAUTION!]</b>	11:52	12:37	12:38	12:40
<b>19.4</b>	<b>137.1</b>	<b>KOM 2 - MERU, Cat 4, 51m</b>	<b>Straight On</b>	<b>Red sign "Awas Kurangkan Laju" on the left</b>	<b>11:54</b>	<b>12:39</b>	<b>12:40</b>	<b>12:42</b>

# Schedule



## Stage 8 | Saturday | 30 September 2023

Setia Alam - Kuala Lumpur | Race Distance: 156.5 km

KM	KM TO GO	FEATURES	INSTRUCTION	DESCRIPTION	ESTIMATED TIME OF ARRIVAL (km/hrs)			
					Cavalcade @ 45mins	46kph	44kph	42kph
19.9	136.6	Traffic Light Junction	Turn Right	To Jalan Paip	11:55	12:40	12:41	12:42
24.5	132.0	T-Junction	Turn Right	"To Jalan Kenangan Opposite Carriageway 100m"	12:01	12:46	12:47	12:49
24.6	131.9	Traffic Light Junction	Straight On	"To Persiaran Hamzah Alang Back to Normal Carriageway"	12:01	12:46	12:47	12:49
27.7	128.8	Sign	Straight On	Balai Bomba dan Penyelamat Kapar on the left	12:05	12:50	12:52	12:54
27.8	128.7	Sign	Straight On	Petronas Jalan Hamzah Alang on the right	12:05	12:50	12:52	12:54
29.3	127.2	Traffic Light Junction	Straight On	Left to Klang / Shah Alam	12:07	12:52	12:54	12:56
30.0	126.5	<b>DRINK START</b>	<b>Straight On</b>	<b>Red triangle "Beri Laluan" on the left</b>	<b>12:08</b>	<b>12:53</b>	<b>12:55</b>	<b>12:57</b>
30.0	126.5	<b>WASTE ZONE 1 START</b>	<b>Straight On</b>		<b>12:08</b>	<b>12:53</b>	<b>12:55</b>	<b>12:57</b>
30.5	126.0	<b>WASTE ZONE 1 END</b>	<b>Straight On</b>	<b>WASTE ZONE 1 END</b>	<b>12:09</b>	<b>12:54</b>	<b>12:55</b>	<b>12:58</b>
31.6	124.9	Traffic Light Junction	Straight On	SMK Tengku Idris Shah on the left	12:10	12:55	12:57	12:59
31.7	124.8	Traffic Light Junction	Turn Right	To Jalan Besar / Jalan Klang - Teluk Intan	12:10	12:55	12:57	12:59
32.2	124.3	<b>SPRINT 1 - KAPAR</b>	<b>Straight On</b>	<b>Sign "Shell 2KM on the left, Guardian Pharmacy on the right"</b>	<b>12:11</b>	<b>12:56</b>	<b>12:58</b>	<b>13:00</b>
38.5	118.0	Splitter	Both Sides		12:19	13:04	13:06	13:09
39.0	117.5	Splitter	Both Sides		12:20	13:05	13:07	13:10
42.0	114.5	Splitter	Both Sides	6 Splitter in 3.5 km	12:24	13:09	13:11	13:14
46.4	110.1	Sign	Straight On	Klinik Kesihatan Jeram on the left	12:29	13:14	13:17	13:20



# Schedule

## Stage 8 | Saturday | 30 September 2023 Setia Alam - Kuala Lumpur | Race Distance: 156.5 km

KM	KM TO GO	FEATURES	INSTRUCTION	DESCRIPTION	ESTIMATED TIME OF ARRIVAL (km/hrs)			
					Cavalcade @ 45mins	46kph	44kph	42kph
47.0	109.5	Splitter	Both Sides	SMA Jeram on the right	12:30	13:15	13:18	13:21
47.6	108.9	Splitter	Both Sides		12:31	13:16	13:19	13:22
49.2	107.3	Traffic Light Junction	Straight On		12:33	13:18	13:21	13:24
<b>49.4</b>	<b>107.1</b>	<b>SPRINT 2 - SUNGAI BULOH</b>	<b>Straight On</b>	<b>Overhead Pedestrian Bridge, Masjid Jamek Sungai Buloh on the left</b>	<b>12:33</b>	<b>13:18</b>	<b>13:21</b>	<b>13:25</b>
52.9	103.6	Splitter	Keep Left		12:38	13:23	13:26	13:30
56.6	99.9	Splitter	Both Sides		12:43	13:28	13:31	13:35
57.1	99.4	Splitter	Keep Left		12:43	13:28	13:32	13:36
58.2	98.3	Sign	Straight On	Ibu Pejabat Polis Daerah Kuala Selangor on the right	12:45	13:30	13:33	13:37
59.9	96.6	Sign	Straight On	Petronas on the right	12:47	13:32	13:35	13:40
60.8	95.7	Fork Junction	Keep Right		12:48	13:33	13:37	13:41
62.5	94.0	Sign	Straight On	Petronas Pasir Penambang on the left	12:50	13:35	13:39	13:43
64.3	92.2	Traffic Light Junction	Turn Right	To Jalan Bukit Belimbing (Sek Men Keb Pengkalan Permatang on the left)	12:53	13:38	13:41	13:46
68.0	88.5	Hump 3X	Straight On	<b>[CAUTION!]</b>	12:58	13:43	13:46	13:51
69.5	87.0	Hump 2X	Straight On	<b>[CAUTION!]</b>	13:00	13:45	13:48	13:53
70.8	85.7	T-Junction	Turn Right	To Jalan Raja Musa	13:01	13:46	13:50	13:55
<b>71.0</b>	<b>85.5</b>	<b>WASTE ZONE 2 START</b>	<b>Straight On</b>	<b>Awas Junction Sign on the left</b>	<b>13:02</b>	<b>13:47</b>	<b>13:50</b>	<b>13:55</b>
<b>71.5</b>	<b>85.0</b>	<b>WASTE ZONE 2 END</b>	<b>Straight On</b>		<b>13:02</b>	<b>13:47</b>	<b>13:51</b>	<b>13:56</b>
<b>71.5</b>	<b>85.0</b>	<b>FEEDING ZONE START</b>	<b>Straight On</b>		<b>13:02</b>	<b>13:47</b>	<b>13:51</b>	<b>13:56</b>

# Schedule



## Stage 8 | Saturday | 30 September 2023

Setia Alam - Kuala Lumpur | Race Distance: 156.5 km

KM	KM TO GO	FEATURES	INSTRUCTION	DESCRIPTION	ESTIMATED TIME OF ARRIVAL (km/hrs)			
					Cavalcade @ 45mins	46kph	44kph	42kph
72.5	84.0	FEEDING ZONE END	Straight On		13:03	13:48	13:52	13:58
72.5	84.0	WASTE ZONE 3 START	Straight On		13:03	13:48	13:52	13:58
73.0	83.5	WASTE ZONE 3 END	Straight On		13:04	13:49	13:53	13:58
78.1	78.4	Hump	Straight On	[CAUTION!]	13:11	13:56	14:00	14:06
81.0	75.5	Hump	Straight On	[CAUTION!]	13:15	14:00	14:04	14:10
84.1	72.4	Hump	Straight On	[CAUTION!]	13:19	14:04	14:08	14:14
85.3	71.2	Bridge	Straight On		13:20	14:05	14:10	14:16
85.9	70.6	Traffic Light Junction	Turn Right	Dir : Bestari Jaya	13:21	14:06	14:11	14:17
87.0	69.5	Hump	Straight On	[CAUTION!]	13:22	14:07	14:12	14:18
88.6	67.9	Traffic Light Junction	Turn Right	To Jalan Rawang / Dir : Kuala Selangor / Ijok	13:24	14:09	14:14	14:21
88.9	67.6	Bridge	Straight On		13:25	14:10	14:15	14:21
89.1	67.4	Traffic Light Junction	Turn Left	To Jalan Bukit Badong	13:25	14:10	14:15	14:21
94.9	61.6	Traffic Light Junction	Straight On	Jalan Pakat 3 on the right	13:33	14:18	14:23	14:30
96.3	60.2	Traffic Light Junction	Turn Left	To Laluan 54 / Jalan Kuala Selangor (Petronas Ijok on the left)	13:35	14:20	14:25	14:32
99.6	56.9	Traffic Light Junction	Straight On	8 Traffic Light Junction in 8.9 km	13:39	14:24	14:29	14:36
108.7	47.8	Sign	Straight On	KIPMall Desa Coalfields on the right	13:51	14:36	14:42	14:49
108.7	47.8	WASTE ZONE 4 START	Straight On		13:51	14:36	14:42	14:49
109.2	47.3	WASTE ZONE 4 END	Straight On		13:51	14:36	14:42	14:50



# Schedule

**Stage 8 | Saturday | 30 September 2023**  
 Setia Alam - Kuala Lumpur | Race Distance: 156.5 km

KM	KM TO GO	FEATURES	INSTRUCTION	DESCRIPTION	ESTIMATED TIME OF ARRIVAL (km/hrs)			
					Cavalcade @ 45mins	46kph	44kph	42kph
109.5	47.0	Splitter	Keep Left		13:52	14:37	14:43	14:50
110.3	46.2	Sign	Straight On	Petronas Merbau Indah on the right	13:53	14:38	14:44	14:52
112.2	44.3	Fork Junction	Keep Right		13:55	14:40	14:46	14:54
113.8	42.7	Fork Junction	Keep Right		13:57	14:42	14:49	14:57
117.4	39.1	Sign	Straight On	Kolej Vokasional Sg. Buloh on the left	14:02	14:47	14:53	15:02
118.3	38.2	Sign	Straight On	Klinik Kesihatan Paya Jaras on the left	14:03	14:48	14:55	15:03
119.1	37.4	Traffic Light Junction	Straight On	Jalan 3/2 on the right	14:04	14:49	14:56	15:04
<b>119.4</b>	<b>37.1</b>	<b>SPRINT 3 - PAYA JARAS</b>	<b>Straight On</b>	<b>PLUS Highway Sign on the left, GTMax on the right</b>	<b>14:05</b>	<b>14:50</b>	<b>14:56</b>	<b>15:05</b>
120.1	36.4	Fork Junction	Keep Right	Fork Junction	14:06	14:51	14:57	15:06
120.4	36.1	Fork Junction	Keep Right	To Jalan Kuala Selangor (Sign "Seksyen U20 TSB" on the left)	14:06	14:51	14:58	15:06
121.4	35.1	Fork Junction	Keep Right	To Jalan Kuala Selangor (Sign Hotel on the left)	14:07	14:52	14:59	15:07
121.7	34.8	Fork Junction	Keep Right	To Jalan Kuala Selangor (Hindu Temple - Yellow Wall) on the left	14:08	14:53	14:59	15:08
122.9	33.6	Fork Junction	Keep Right	To Jalan Kuala Selangor (Furniture Store on the left)	14:09	14:54	15:01	15:10
123.4	33.1	Fork Junction	Keep Right	To Jalan Kuala Selangor (green sign "JAKOA" on the left)	14:10	14:55	15:02	15:10
124.6	31.9	Fork Junction	Keep Right	To Jalan Kuala Selangor - Sun Energy Floral Trading on the left	14:11	14:56	15:03	15:12



# Schedule



## Stage 8 | Saturday | 30 September 2023

Setia Alam - Kuala Lumpur | Race Distance: 156.5 km

KM	KM TO GO	FEATURES	INSTRUCTION	DESCRIPTION	ESTIMATED TIME OF ARRIVAL (km/hrs)			
					Cavalcade @ 45mins	46kph	44kph	42kph
125.7	30.8	Fork Junction	Keep Right	To Jalan Kuala Selangor (Valencia - black building on the left)	14:13	14:58	15:05	15:14
126.3	30.2	Fork Junction	Keep Right	To Jalan Kuala Selangor - Milen Raya Sdn Bhd on the left	14:14	14:59	15:06	15:14
126.5	30.0	Fork Junction	Keep Right	To Jalan Lingkar Tengah 2 (MH Prestige Auto (Honda) on the left	14:14	14:59	15:06	15:15
126.9	29.6	Fork Junction	Keep Right	To Jalan Lingkar Tengah 2 (JKR sign on the wall on the right)	14:14	14:59	15:06	15:15
128.0	28.5	Fork Junction	Keep Right	To Jalan Lingkar Tengah 2 - Wisma Lee Hoe on the left	14:16	15:01	15:08	15:17
134.1	22.4	Fork Junction	Keep Right	To Jalan Lingkar Tengah 2 (CBSB building on the right)	14:24	15:09	15:16	15:26
135.5	21.0	Fork Junction	Keep Right	To Jalan Lingkar Tengah 2 (Hindu Temple Batu Caves on the left)	14:26	15:11	15:18	15:28
136.1	20.4	Fork Junction	Keep Right	To Jalan Lingkar Tengah 2 (Moonlight Hotel on the left)	14:26	15:11	15:19	15:28
<b>136.5</b>	<b>20.0</b>	<b>DRINK FINISH</b>	<b>Straight On</b>		<b>14:27</b>	<b>15:12</b>	<b>15:19</b>	<b>15:29</b>
<b>136.5</b>	<b>20.0</b>	<b>WASTE ZONE 5 START</b>	<b>Straight On</b>		<b>14:27</b>	<b>15:12</b>	<b>15:19</b>	<b>15:29</b>
<b>137.0</b>	<b>19.5</b>	<b>WASTE ZONE 5 END</b>	<b>Straight On</b>		<b>14:28</b>	<b>15:13</b>	<b>15:20</b>	<b>15:30</b>
137.6	18.9	Fork Junction	Keep Right	To Jalan Lingkar Tengah 2 - CIMB Bank Taman Sri Gombak on the left	14:28	15:13	15:21	15:31



# Schedule

## Stage 8 | Saturday | 30 September 2023 Setia Alam - Kuala Lumpur | Race Distance: 156.5 km

KM	KM TO GO	FEATURES	INSTRUCTION	DESCRIPTION	ESTIMATED TIME OF ARRIVAL (km/hrs)			
					Cavalcade @ 45mins	46kph	44kph	42kph
137.7	18.8	Fork Junction	Keep Right	Balai Polis Prima Sri Gombak on the left	14:28	15:13	15:21	15:31
138.2	18.3	Fork Junction	Keep Right	To Jalan Lingkar Tengah 2 (green sign "Kuantan / Melawati / KTAR / UIAM")	14:29	15:14	15:22	15:31
138.6	17.9	Fork Junction	Keep Right	To Jalan Lingkar Tengah 2 (Golden Tan Auto Sdn Bhd & Pacific Insurance on the right)	14:30	15:15	15:22	15:32
140.0	16.5	Fork Junction	Keep Right	To Jalan Lingkar Tengah 2 (Shell on the left)	14:31	15:16	15:24	15:34
140.1	16.4	Fork Junction	Keep Right	To Jalan Lingkar Tengah 2 (Shell on the left)	14:32	15:17	15:24	15:34
141.8	14.7	Fork Junction	Keep Right	To Jalan Lingkar Tengah 2 (Blue sign "Seremban / Jalan Hulu Kelang / Ampang")	14:34	15:19	15:27	15:37
142.0	14.5	Fork Junction	Keep Right	To Jalan Lingkar Tengah 2 (white building on the right)	14:34	15:19	15:27	15:37
142.4	14.1	Fork Junction	Keep Left	To Jalan Lingkar Tengah 2 (KL East Mall on the left / Burger King on the right)	14:35	15:20	15:27	15:37
143.6	12.9	Fork Junction	Keep Right	To Jalan Lingkar Tengah 2 (red sign "Restoran Awwal Maju" on the left)	14:36	15:21	15:29	15:39
144.6	11.9	Fork Junction	Keep Right	To Jalan Lingkar Tengah 2 (KFC on the right)	14:37	15:22	15:30	15:41
145.5	11.0	Fork Junction	Keep Right	To Jalan Lingkar Tengah 2 (black-yellow sign "DUNLOP" on the right)	14:39	15:24	15:32	15:42

# Schedule



## Stage 8 | Saturday | 30 September 2023

Setia Alam - Kuala Lumpur | Race Distance: 156.5 km

KM	KM TO GO	FEATURES	INSTRUCTION	DESCRIPTION	ESTIMATED TIME OF ARRIVAL (km/hrs)			
					Cavalcade @ 45mins	46kph	44kph	42kph
146.8	9.7	Fork Junction	Straight On	Petronas Hulu Klang on the left	14:40	15:25	15:33	15:44
147.4	9.1	Fork Junction	Keep Right	To Jalan Lingkar Tengah 2 (yellow mosque on the right)	14:41	15:26	15:34	15:45
149.4	7.1	Fork Junction	Keep Right	To Jalan Lingkar Tengah 2 (blue bus stop on the left)	14:44	15:29	15:37	15:47
149.6	6.9	Fork Junction	Keep Right	To Jalan Lingkar Tengah 2 (brown-silver Petronas logo on the right)	14:44	15:29	15:37	15:48
150.3	6.2	Fork Junction	Keep Right	To Jalan Lingkar Tengah 2	14:45	15:30	15:38	15:49
151.5	5.0	Fork Junction	Keep Left	Dir : Jalan Ampang (blue sign Jalan Ampang / KLCC)	14:46	15:31	15:40	15:50
151.7	4.8	Traffic Light Junction	Straight On	Petron on the left	14:47	15:32	15:40	15:51
152.2	4.3	Traffic Light Junction	Turn Right	To Jalan Ampang / Dir: Pusat Bandaraya (M-City on the right)	14:47	15:32	15:41	15:51
155.7	0.8	Traffic Light Junction	Straight On	Persimpangan Jalan Tun Razak - Jalan Ampang	14:52	15:37	15:45	15:56
156.1	0.4	Traffic Light Junction	Straight On	Wisma Central on the left	14:52	15:37	15:46	15:57
<b>156.5</b>	<b>0.0</b>	<b>Race Finish at Petronas Twin Towers, Kuala Lumpur</b>			<b>14:53</b>	<b>15:38</b>	<b>15:47</b>	<b>15:58</b>



# Time Table

## Stage 8 | Saturday | 30 September 2023 Setia Alam - Kuala Lumpur | Race Distance: 156.5 km

### START TIME TABLE

Start Location :

Setia City Convention Centre,  
Setia Alam, Selangor

Time	Activities
0630 hrs	VPP in Operation Race Facilities Crew on Site Race Security on Site Road Closure at Start Area
0700 hrs	PA System on
1030 hrs	Race Officials on Site Arrival of Guests Arrival of Teams
1050 hrs	Riders Signing On Opens
1100 hrs	Arrival of VIPs
1115 hrs	Cavalcade Departs
1150 hrs	Riders Signing on Closes Advance Vehicles Depart Presentation of Race Leaders
1155 hrs	Riders Assemble at Start Line
<b>1200 hrs</b>	<b>Petronas Le Tour de Langkawi Flag-Off</b>
1215 hrs	VIPs Depart
1230 hrs	De-Rig Commences
1430 hrs	Roads Re-Open

### FINISH TIME TABLE

Finish Location :

Petronas Twin Towers,  
Kuala Lumpur

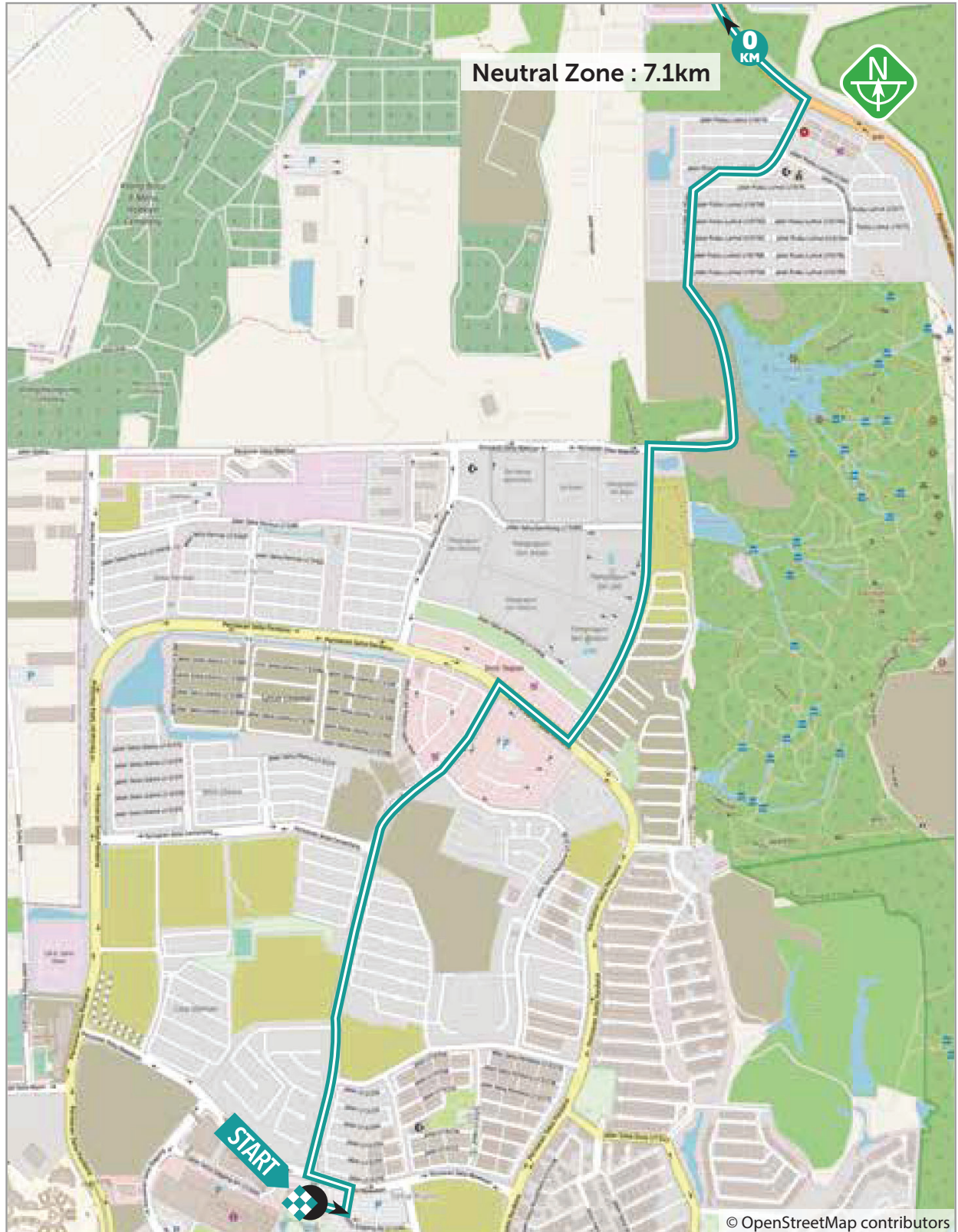
Time	Activities
0800 hrs	Race Facilities Crew on Site Road Closure at Finish Area
0900 hrs	Race Security on Site Race Officials on Site
1000 hrs	PA System on
1100 hrs	Side Events Start
1420 hrs	Arrival of Guests
1435 hrs	Arrival of VIPs
1445 hrs	Advance Vehicles Arrive
1453 hrs	Cavalcade Arrives
<b>1538 hrs</b>	<b>Petronas Le Tour de Langkawi Arrives - Fast Schedule</b>
<b>1547 hrs</b>	<b>Petronas Le Tour de Langkawi Arrives - Expected Schedule</b>
1615 hrs	Prize Giving Ceremony
1715 hrs	Ceremony Concludes / VIPs Depart
1745 hrs	De-Rig Commences
1945 hrs	Roads Re-Open

# Start Location Map



**Stage 8 | Saturday | 30 September 2023**

Setia Alam - Kuala Lumpur | Race Distance: 156.5 km





# Finish Location Map

**Stage 8 | Saturday | 30 September 2023**  
Setia Alam - Kuala Lumpur | Race Distance: 156.5 km

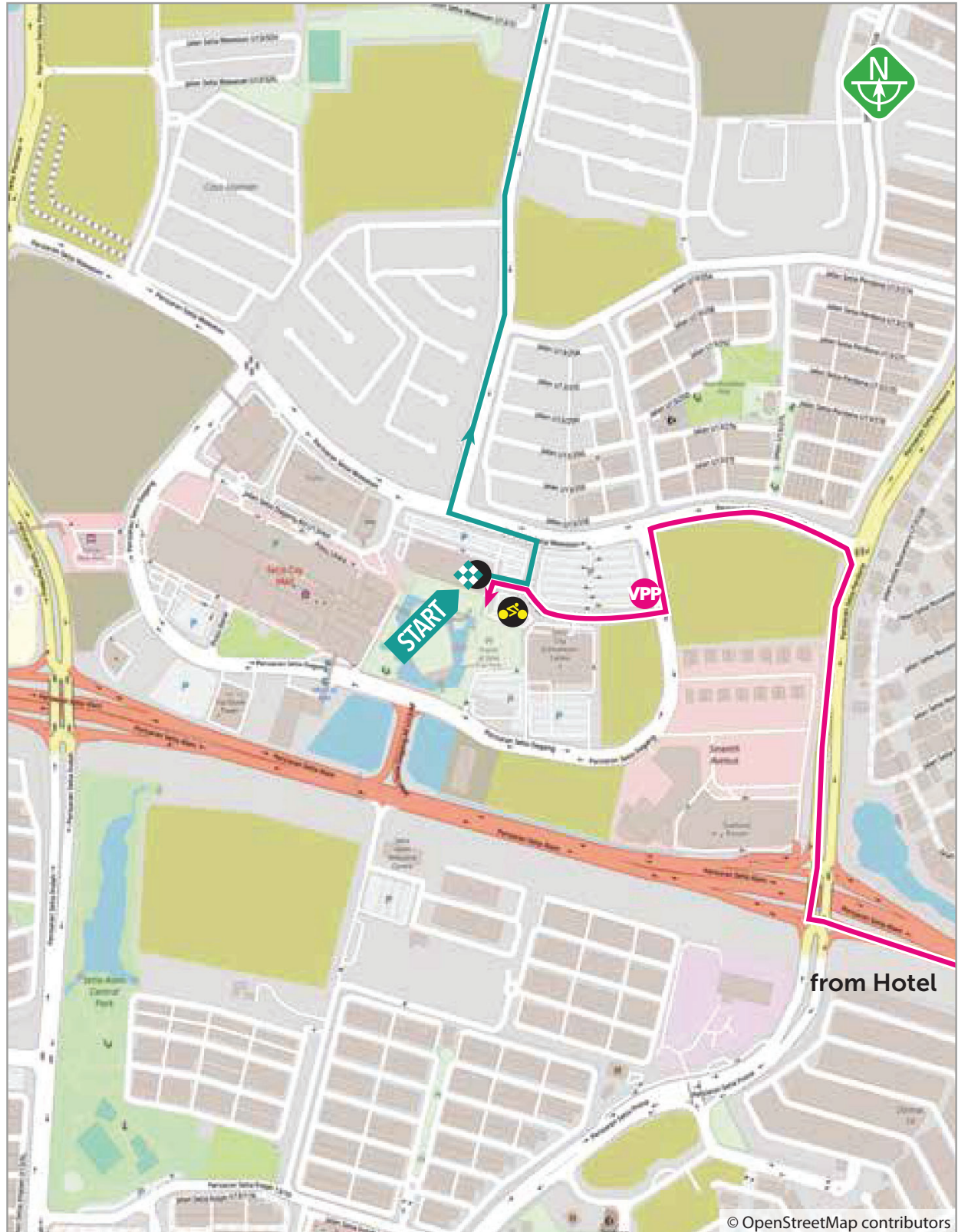


# Vehicle Passage Point Map



Stage 8 | Saturday | 30 September 2023

Setia Alam - Kuala Lumpur | Race Distance: 156.5 km

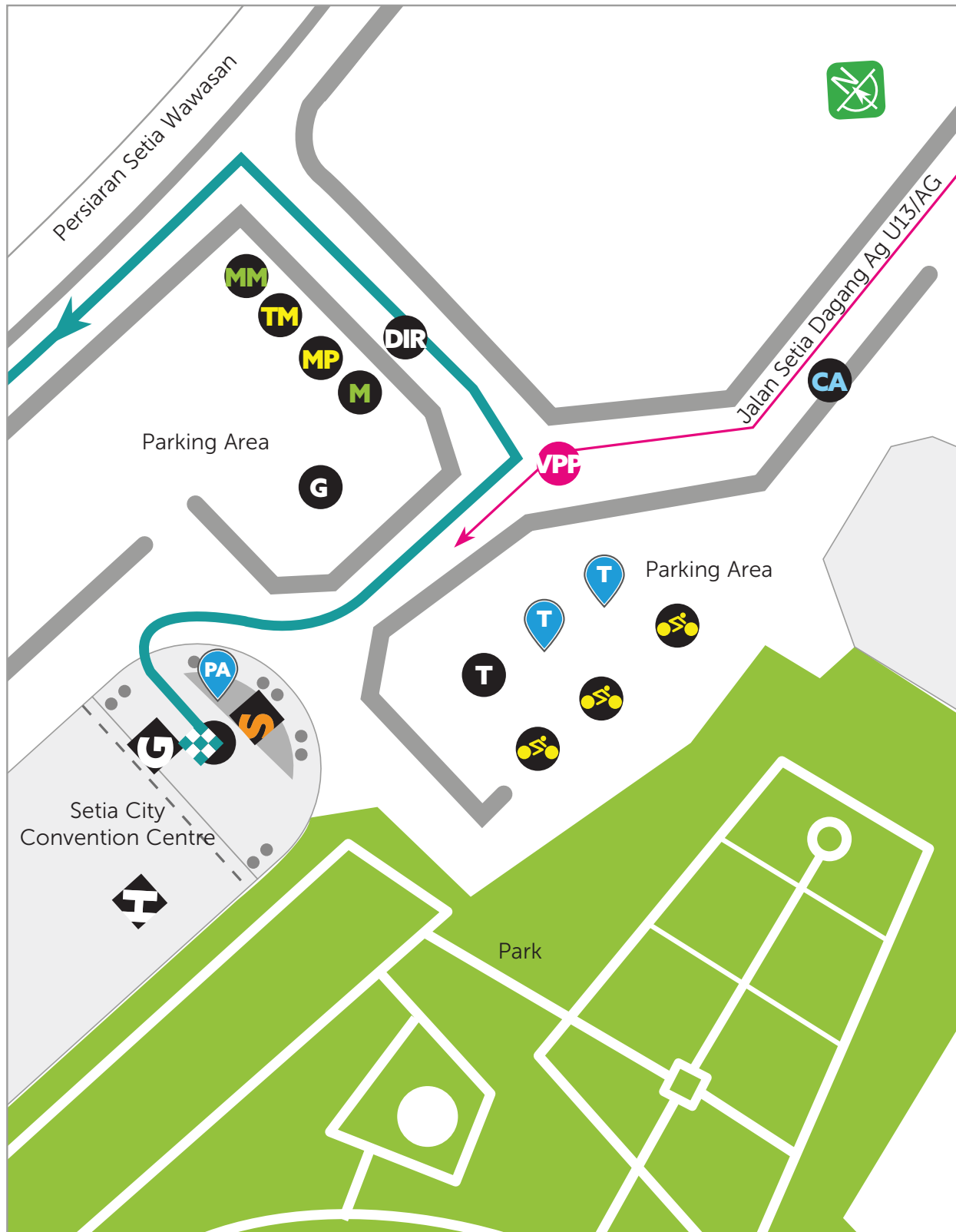


© OpenStreetMap contributors



# Start Layout Map

**Stage 8 | Saturday | 30 September 2023**  
Setia Alam - Kuala Lumpur | Race Distance: 156.5 km



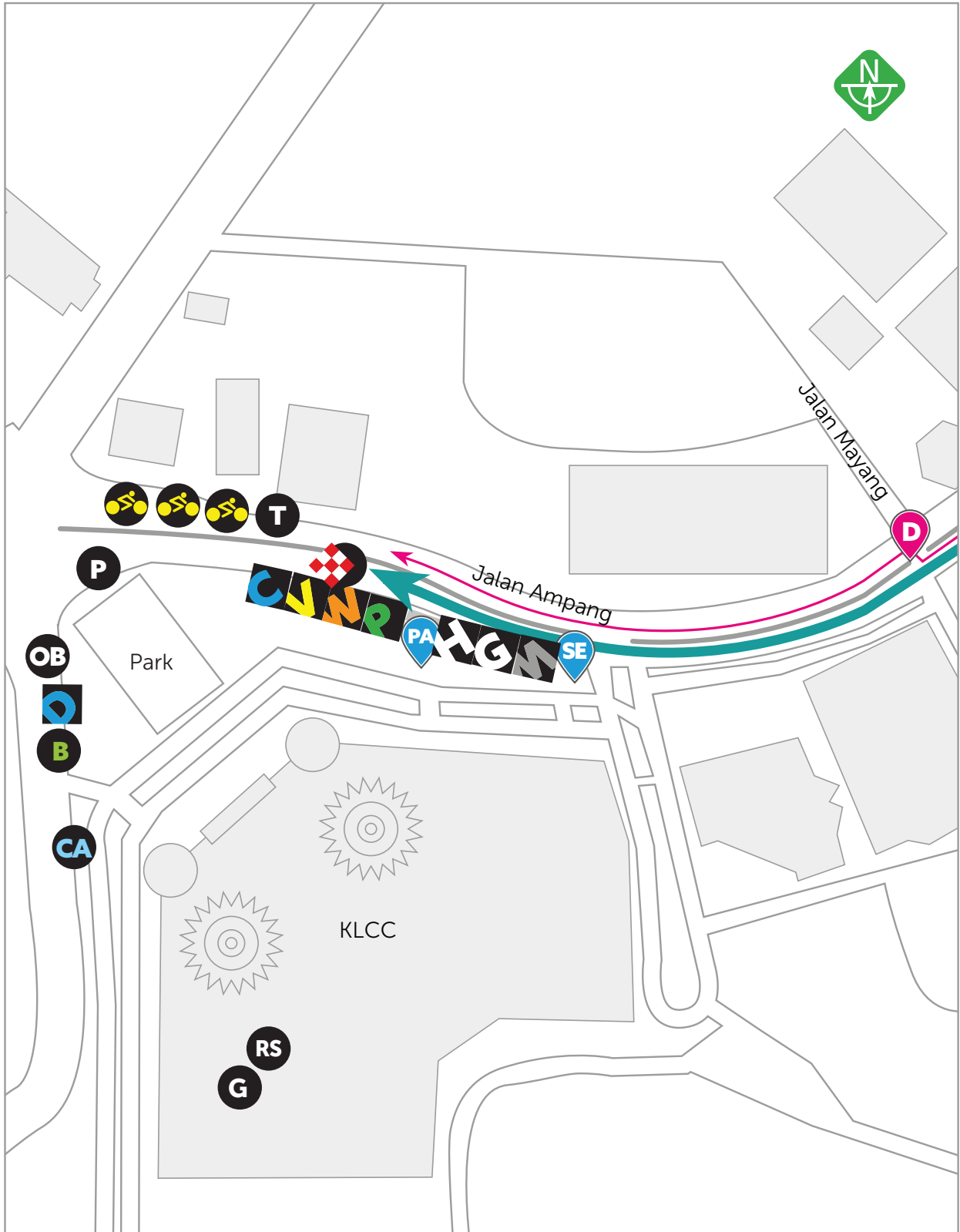


# Finish Layout Map



Stage 8 | Saturday | 30 September 2023

Setia Alam - Kuala Lumpur | Race Distance: 156.5 km





# Transfer to Hotel Map

**Stage 8 | Saturday | 30 September 2023**  
Setia Alam - Kuala Lumpur | Race Distance: 156.5 km

**KLCC - Shah Alam**

